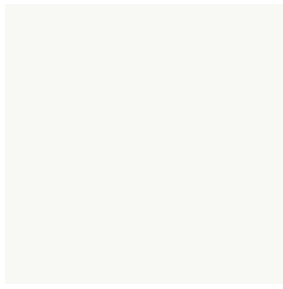


EXTERIOR COLOURS



0077
Starfire Pearl



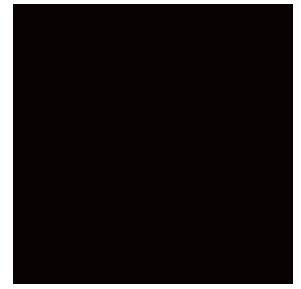
01G1
Tungsten Pearl



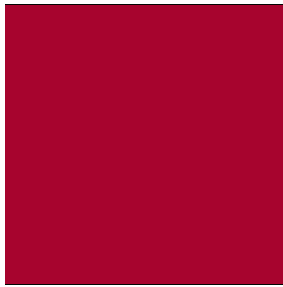
01H9
Mercury Grey Metallic



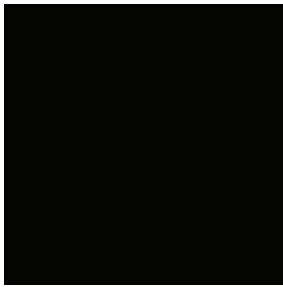
0212
Obsidian



0217
Starlight Black Mica



03R1
Matador Red Mica



04T5
Truffle Mica



04U7
Satin Cashmere Metallic



08V3
Deep Sea Mica

INTERIOR COLOURS AND WOOD TRIMS



Parchment
Leather



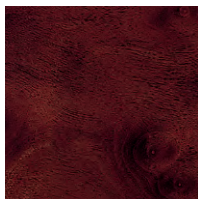
Light Grey
Leather



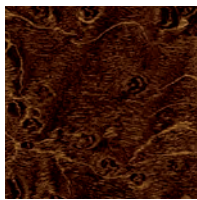
Black
Leather



Saddle Tan
Leather



Medium Brown
Walnut



Espresso Bird's-Eye
Maple

COLOUR AVAILABILITY

| | Parchment Leather | Light Grey Leather | Black Leather | Saddle Tan Leather |
|--------------------------------|----------------------|-----------------------|------------------|-----------------------|
| Starfire Pearl | ■ | | ■ | ■ |
| Tungsten Pearl | | ■ | ■ | |
| Mercury Grey Metallic | ■ | | ■ | |
| Obsidian | ■ | | ■ | |
| Starlight Black Mica | | | | ■ |
| Matador Red Mica | ■ | | ■ | |
| Truffle Mica | ■ | | ■ | |
| Satin Cashmere Metallic | ■ | | | |
| Deep Sea Mica | ■ | ■ | | |
| Medium Brown Walnut Trim | ■ | | | ■ |
| Espresso Bird's-Eye Maple Trim | | ■ | ■ | |

Visit our Web site and try on a colour. lexus.ca

Leather seating surfaces are standard on all models. Ultra Premium with Navigation Package is standard with premium leather seating surfaces.

Colours and interiors are subject to change during model year. Please see your Lexus Dealer for details.

WHEELS



17-inch split-5-spoke alloy wheels
STANDARD



17-inch 10-spoke Graphite-polished alloy wheels
AVAILABLE

BODY AND DIMENSIONS

HEADROOM

front/rear w/moonroof

950/935 mm - 37.4/36.8 in

front/rear w/panorama glass roof

960/940 mm - 37.8/37.0 in

SHOULDER ROOM

front/rear

1,455/1,430 mm - 57.3/56.3 in

HEIGHT

1,450 mm/57.1 in



WIDTH

1,820 mm/71.7 in

TRUNK CAPACITY (max)

418 litres/14.8 cubic feet

FUEL-TANK CAPACITY

70 litres/15.4 gallons

LEGROOM

front/rear

1,071/911 mm - 42.2/35.9 in



WHEEL BASE

2,775 mm/109.3 in

OVERALL LENGTH

4,875 mm/191.9 in

GENERAL

TYPE Five-passenger luxury sedan

CONSTRUCTION Welded-steel unibody

CURB WEIGHT 1,635 kg/3,605 lb

ENGINE

| | |
|-------------------|--|
| TYPE | 60° V6, aluminum block and heads |
| DISPLACEMENT | 3.5 litres |
| VALVETRAIN | Four cam, four valves per cylinder, with Dual Variable Valve Timing with intelligence (Dual VVT-i) |
| COMPRESSION RATIO | 10.8:1 |
| HORSEPOWER AT RPM | 268 hp @ 6,200 |
| TORQUE AT RPM | 248 lb-ft @ 4,700 |
| EMISSION RATING | Tier 2 Bin 5 Emissions Rating |

PERFORMANCE

| | | |
|------------------------------|---------------------|--|
| FUEL ECONOMY ESTIMATES | 109/71/9.2 L/100 km | 26/40/31 mpg ¹⁰ (city/highway/combined) |
| AERODYNAMIC DRAG COEFFICIENT | 0.28 | |
| TURNING CIRCLE | 11.2 m/36.7 ft | |

DRIVETRAIN

| | |
|-------------------|---|
| TYPE | Front-wheel drive |
| TRANSMISSION | Six-speed sequential-shift automatic Super Electronically Controlled Transmission (Super ECT) |
| FINAL DRIVE RATIO | 3.685:1 |

CHASSIS

| | |
|------------------|--|
| SUSPENSION | Front: Independent, MacPherson struts with coil springs, gas-pressurized shock absorbers and stabilizer bar Rear: Independent, dual-link MacPherson struts with coil springs, gas-pressurized shock absorbers and stabilizer bar |
| STEERING | Engine-speed-sensing, progressive power-assisted rack-and-pinion |
| BRAKES | Four-wheel power-assisted discs, with four-sensor, four-channel Anti-lock Brake System (ABS), Electronic Brake-force Distribution (EBD) and Brake Assist (BA). ¹² 11.7-inch ventilated front, 11.1-inch solid rear discs |
| WHEELS AND TIRES | 17-inch split-5-spoke alloy wheels with P215/55R17 all-season tires. Full-size spare tire on alloy wheel |

STANDARD LUXURY FEATURES

LUXURY AND CONVENIENCE

SmartAccess¹⁵ with push-button Start/Stop
Dual-zone automatic climate control with interior air filter, smog sensor and automatic recirculation mode
Power tilt-and-telescopic steering wheel
Power tilt-and-slide moonroof with one-touch open/close and sliding sunshade
Power windows with one-touch auto open/close feature
Electrochromic (auto-dimming) side view mirrors
Remote-linked window and moonroof opening
Retained accessory power for moonroof and windows
Electrochromic (auto-dimming) inside rearview mirror with compass
Power door locks
Driver footwell lamp, glove box and rear reading lamp
Door courtesy lamps
Cruise control
Centre console with storage bin and accessory power outlet
Dual cupholders, front and rear
Illuminated entry system with fadeout
HomeLink^{®8} universal transceiver to operate compatible garage, gate, home lighting and home security systems

SEATING AND TRIM

10-way power driver's and front passenger's (including lumbar) heated bucket seats
Lexus Memory System with two settings to control power driver's seat and outside mirrors
Height-adjustable headrests for all seats
Leather-trimmed seat surfaces
Medium brown walnut or espresso bird's-eye maple wood interior trim
Leather-wrapped steering wheel and shift knob

COMMUNICATION, AUDIO AND NAVIGATION

Lexus 8-speaker Premium Sound System with Automatic Sound Levelizer (ASL) and in-dash, single-feed, six-disc CD auto-changer
Roof-mounted fin antenna
Integrated satellite radio⁴
Auxiliary iPod^{®5}/MP3/Windows Media Audio (WMA) port
Bluetooth[®] capability⁶
Bluetooth[®] audio⁶ profile for wireless integration of compatible music players with in-vehicle audio system

INSTRUMENTATION AND CONTROLS

Steering-wheel-mounted audio and display controls
Liquid-crystal multi-information console display
Electroluminescent instrumentation
ECO driving indicator
Illuminated interior electronic trunk-lid and fuel-filler door releases
Outside temperature gauge

STANDARD SAFETY AND SECURITY FEATURES

ACTIVE SAFETY

Four-wheel power-assisted disc brakes with front ventilated discs
Four-sensor, four-channel Anti-lock Brake System (ABS)
Smart Stop Technology
Vehicle Stability Control (VSC)¹¹ with cutoff switch
Traction Control (TRAC)
Brake Assist (BA)¹²
Electronic Brake-force Distribution (EBD)
Direct Tire Pressure Monitor System¹³
Automatic on/off projector-beam headlamps with auto-off delay
Integrated foglamps
Tinted glass
Water-repellent front-door glass
High solar energy absorbing window glass
Rain-sensing intermittent windshield wipers with mist cycle
Rear-window defroster with auto-off timer
Power-adjustable heated side view mirrors with integrated turn indicators and puddle lamps

PASSIVE SAFETY

Driver's and front passenger's advanced airbag system (SRS)¹⁴ with front passenger's twin-chamber airbag (SRS)¹⁴
Front and rear seat-mounted side airbags (SRS)¹⁴
Driver's and front passenger's knee airbags (SRS)¹⁴
Front and rear side curtain airbags (SRS)¹⁴
Active front headrests with whiplash protection⁷
Three-point seatbelts for all seating positions, pre-tensioners with force limiters for front and outboard rear seats
Automatic Locking Retractor/Emergency Locking Retractor (ALR/ELR) seatbelts for all passenger seating positions. Emergency Locking Retractor (ELR) only for driver's seat
Height-adjustable front shoulder belt anchors
Child Restraint Seat (CRS) tether anchor brackets for all rear seating positions
Highly rigid body structure with front and rear crumple zones
Side-impact door beams
Reinforcements in pillars and door sills
Impact-dissipating upper interior trim
Collapsible steering column

SECURITY

Vehicle theft-deterrent and engine-immobilizer system
Emergency interior trunk release
First aid kit
Tool kit

OPTION PACKAGES

TOURING EDITION

- Rear spoiler
- High-Intensity Discharge (HID) headlamps
- Dual-swivel Adaptive Front Lighting System (AFS)
- Premium alloy wheels

NAVIGATION PACKAGE

- Voice-activated HDD Navigation System¹ with backup camera²
- USB audio input for iPod®/compatible music player integration with audio system
- Heated and ventilated front seats

EXECUTIVE EDITION

Includes Navigation Package plus:

- Wood-trimmed steering wheel and shift knob
- Saddle tan interior
- Premium alloy wheels

PREMIUM WITH NAVIGATION PACKAGE

Includes Navigation Package plus:

- Wood-trimmed steering wheel and shift knob
- Driver's seat power cushion extender
- Lexus Memory System for front passenger's power seat
- High-Intensity Discharge (HID) headlamps
- Dual-swivel Adaptive Front Lighting System (AFS)
- Power rear window sunshade
- Clearance and backup sonars

ULTRA PREMIUM WITH NAVIGATION PACKAGE


Includes Premium with Navigation Package plus:

- Premium leather-trimmed interior
- Mark Levinson® 14-speaker, 300-watt⁹ Premium Surround Sound Audio System³ with 7.1 channel architecture and in-dash, single-feed, six-disc DVD/CD auto-changer
- Panoramic glass roof
- Premium 17-inch 10-spoke Graphite-polished alloy wheels
- Satellite trunk-mounted antenna


ACCESSORIES

- Block heater
- Bodyside moulding
- Cargo net
- Rear spoiler
- 17-inch E-Sport alloy wheels

THE BEST WAY TO FINANCE YOUR NEW ES – EASILY, QUICKLY, AFFORDABLY.

 • Lexus Financial Services does nothing but finance or lease Lexus vehicles; thus, we know financing and we know Lexus. • Our interest rates are fully competitive and our terms flexible (up to 72 months). • Since we offer Web services, you can: A: check out our rate; B: save time by getting credit approved on-line – before checking out the vehicle(s) of your interest. • Finally, one-stop shopping (at all Lexus Dealerships) saves you time. We invite you to visit us at lexus.ca or call us at 1-800-26-LEXUS.

LEXUS CANADA. Every effort has been made to ensure the specifications and equipment shown are accurate based on information available at time of printing. In some cases, certain changes in standard equipment, options or product delays may occur, which would not be reflected in this brochure. Lexus Canada reserves the right to make these changes without notice or obligation. Your Lexus Dealer is the best source for up-to-date information.

 Lexus invites you to join us in Club Lexus, a very exceptional compilation of services, offers, special events and pertinent information available only to Lexus owners. To register for Club Lexus, please visit lexus.ca or call 1-800-26-LEXUS.