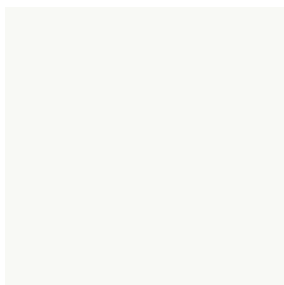
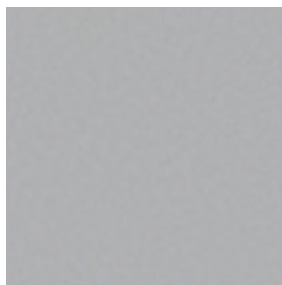


EXTERIOR COLOURS



0077
Starfire Pearl



01G1
Tungsten Pearl



01H9
Mercury Grey Mica



0214
Black Opal Mica^{††}



0217
Starlight Black Mica



03R1
Matador Red Mica

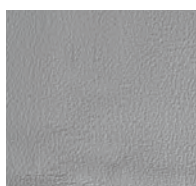


04U7
Satin Cashmere Metallic

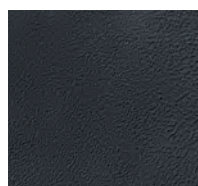
INTERIOR COLOURS AND WOOD TRIMS



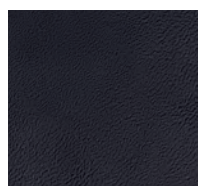
Parchment
Leather



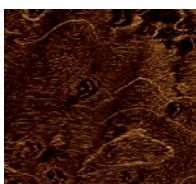
Light Grey
Leather



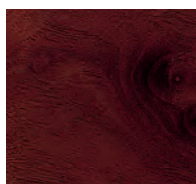
Black
Leather



Black
Fabric



Espresso Bird's-Eye
Maple



Brown Walnut

COLOUR AVAILABILITY

	Parchment Leather	Light Grey Leather	Black Leather	Black Fabric
Starfire Pearl	■		■	■
Tungsten Pearl		■	■	■
Mercury Grey Mica		■	■	■
Black Opal Mica ^{††}			■	
Starlight Black Mica		■	■	■
Matador Red Mica	■		■	■
Satin Cashmere Metallic	■			
Espresso Bird's-Eye Maple Trim		■		
Brown Walnut Trim	■		■	■

Visit our Web site and try on a colour. lexus.ca

^{††}Black Opal Mica is available for RX 450h only. RX 350 is standard with premium fabric seating surfaces. Perforated leather seating surfaces are standard on RX 350 Premium, Touring and Sport Packages. Premium leather seating surfaces are standard on RX 350 Ultra Premium Packages. RX 450h is standard with perforated leather seating surfaces. Premium leather seating surfaces are standard on RX 450h Ultra Premium Packages. Colours and interiors are subject to change during model year. Please see your Lexus Dealer for details.

WHEELS



18-inch 5-spoke alloy wheel
STANDARD RX 350 AND RX 450h



19-in 7-spoke alloy wheel
AVAILABLE RX 350



19-inch split-5-spoke alloy wheel
AVAILABLE RX 450h

GENERAL

TYPE	Five-passenger luxury utility vehicle
CONSTRUCTION	Welded-steel unibody
CURB WEIGHT	1,970 kg/4,510 lb (RX 350) 2,110 kg/4,810 lb (RX 450h)
TOWING CAPACITY (max)	1,587 kg/3,500 lb ²³

BODY AND DIMENSIONS

RX 350

HEADROOM front/rear

992/958 mm - 39.0/37.7 in
(w/o moonroof)

SHOULDER ROOM front/rear

1,473/1,462 mm - 57.9/57.5 in

HEIGHT

1,720 mm/67.7 in
(w/roof rails)
1,695 mm/66.7 in
(w/o roof rails)



WIDTH 1,885 mm/74.2 in

RX 450h

HEADROOM front/rear (w/moonroof)

992/958 mm - 39.0/37.7 in

SHOULDER ROOM front/rear

1,472/1,462 mm - 57.9/57.5 in

HEIGHT

1,720 mm/67.7 in



WIDTH 1,885 mm/74.2 in

RX 350 and RX 450h

CARGO CAPACITY (max)

2,273 litres/80.3 cubic feet (behind front seats)
1,132 litres/40.0 cubic feet (behind rear seats)

FUEL-TANK CAPACITY

72.5 litres/15.9 gallons (RX 350)
65 litres/14.3 gallons (RX 450h)

LEGROOM

front/rear
1,096/934 mm - 43.1/36.8 in (RX 350)
1,096/942 mm - 43.1/37.0 in (RX 450h)

GROUND CLEARANCE

185 mm/7.3 in (RX 350)
175 mm/6.9 in (RX 450h)



WHEELBASE 2,740 mm/107.9 in

OVERALL LENGTH 4,770 mm/187.8 in

ENGINE

RX 350

TYPE	60° V6, aluminum block and heads
DISPLACEMENT	3.5 litres
VALVETRAIN	Four cam, four valves per cylinder, with Dual Variable Valve Timing with intelligence (Dual VVT-i)
COMPRESSION RATIO	10.8:1
HORSEPOWER AT RPM	275 hp @ 6,200 ¹⁰
TORQUE AT RPM	257 lb-ft @ 4,700 ¹⁰
EMISSION RATING	Tier 2 Bin 5 Emissions Rating

RX 450h

TYPE	60° V6, aluminum block and heads
DISPLACEMENT	3.5 litres
VALVETRAIN	Four cam, four valves per cylinder, with Variable Valve Timing with intelligence (VVT-i)
COMPRESSION RATIO	12.5:1
ELECTRIC-DRIVE MOTOR	Front and rear (AWD) high-output, permanent-magnet, electric-drive motors with EV mode
TOTAL SYSTEM HORSEPOWER	295 hp ^{10,21}
EMISSION RATING	Tier 2 Bin 3 Emissions Rating

DRIVETRAIN

RX 350

DRIVE WHEELS	Active Torque Control all-wheel drive with variable torque split and manual-locking centre differential (AWD) Vehicle Stability Control (VSC), ¹³ Traction Control (TRAC), Hill-start Assist Control (HAC) ¹⁵ Vehicle Dynamics Integrated Management (VDIM) ¹³ (optional)
TRANSMISSION	Six-speed automatic Electronically Controlled Transmission with intelligence (ECT-i) with Sequential Shift and Snow modes

RX 450h

DRIVE WHEELS	Part-time all-wheel drive (AWD) with rear electric drive motor(s) ¹¹ Vehicle Stability Control (VSC), ¹³ Traction Control (TRAC), Hill-start Assist Control (HAC) ¹⁵ Vehicle Dynamics Integrated Management (VDIM) ¹³
TRANSMISSION	Electronically controlled Continuously Variable Transmission with intelligence (ECVT-i) with Sequential Shift and Snow modes

PERFORMANCE

RX 350

FUEL ECONOMY ESTIMATES	11.8/8.3/10.2 L/100 km 24/34/28 mpg ¹² (city/highway/combined)
AERODYNAMIC DRAG COEFFICIENT	0.33
TURNING CIRCLE	11.8 m/38.8 ft

RX 450h

FUEL ECONOMY ESTIMATES	6.7/7.2/6.9 L/100 km 42/39/41 mpg ¹² (city/highway/combined)
AERODYNAMIC DRAG COEFFICIENT	0.32
TURNING CIRCLE	11.4 m/37.4 ft

CHASSIS

SUSPENSION	Front: Independent, struts with inversely wound coil springs, gas-pressurized shock absorbers, stabilizer bar Rear: Independent, double-wishbone with coil springs, gas-pressurized shock absorbers, stabilizer bar
------------	--

STEERING	Electric Power Steering system (EPS) Sport-tuned Steering (RX 350 - optional)
----------	--

BRAKES	Four-wheel power-assisted discs, with four-sensor, four-channel Antilock Braking System (ABS), Electronic Brake-force Distribution (EBD) and Brake Assist (BA). ¹⁴ Electronic Controlled Braking (ECB) with regenerative braking function (RX 450h)
--------	---

WHEELS AND TIRES	18-inch 5-spoke alloy wheels with P235/60R18 mud- and snow-rated tires. Temporary spare tire <i>Optional:</i> 19-inch 7-spoke alloy wheels with P235/55R19 mud- and snow-rated tires (RX 350) 19-inch split-5-spoke alloy wheels with P235/55R19 mud- and snow-rated tires (RX 450h)
------------------	---

STANDARD LUXURY FEATURES

LUXURY AND CONVENIENCE

SmartAccess¹⁹ with push-button Start/Stop
Dual-zone automatic climate control with interior air filter
Rear seat heater ducts
Driver seat memory system (RX 450h)
Power tilt-and-telescopic steering wheel
Power windows with one-touch auto open/close
Remote-linked opening for windows and available moonroof
Power moonroof (RX 450h)
Electrochromic (auto-dimming) inside rearview mirror with compass (RX 450h)
Power door locks
Power rear door with jam protection (RX 450h)
Hybrid blue accented front headlamps, rear tail lamps, logos and badges (RX 450h)
Cruise control
Multifunction, in-key remote entry system with rolling-code technology
Illuminated entry system with fadeout
Accessory power outlet (12v), front console and rear cargo area
HomeLink^{®20} universal transceiver to operate compatible garage, gate, home lighting and home security systems
Lexus Personalized Settings (LPS) to customize select electronic functions
Roof mounted spoiler
Silver painted roof rails (RX 450h)
Rear privacy glass
Sliding centre console with storage bin
Dual illuminated vanity mirrors
Retractable tonneau cover

SEATING AND TRIM

Espresso bird's-eye maple woodtrim with light-grey interior or brown walnut woodtrim with parchment or black interior
Premium fabric seat surfaces (RX 350)
Perforated leather seat surfaces (RX 450h)
Leather-wrapped steering wheel and shift knob
8-way driver's and front passenger's (including lumbar) power seats
Heated and ventilated front seats (RX 450h)
Reclining and sliding rear seat (40/20/40 split)

COMMUNICATION, AUDIO AND NAVIGATION

Lexus 9-speaker Premium Sound System with Automatic Sound Levelizer (ASL) and in-dash, single-feed, six-disc CD auto-changer
8-inch LCD multi-information display
Integrated backup camera² (RX 450h)
Bluetooth[®] capability⁶
Integrated XM[®] satellite radio^{1,4}
Satellite roof-mounted fin antenna
USB and auxiliary iPod^{®5}/MP3/Windows Media Audio (WMA) port (RX 450h)

INSTRUMENTATION AND CONTROLS

Steering-wheel-mounted audio and display controls
Liquid-crystal multi-information console display
Electroluminescent instrumentation
Outside temperature gauge
Organic Light Emitting Diode (OLED) multi-information display in gauge cluster

STANDARD SAFETY AND SECURITY FEATURES

ACTIVE SAFETY

Four-wheel ventilated power-assisted disc brakes
Electronic Controlled Braking (ECB2) (RX 450h)
Smart Stop Technology
Four-sensor, four-channel Antilock Braking System (ABS)
Vehicle Dynamics Integrated Management (VDIM)¹³ (RX 450h)
Vehicle Stability Control (VSC)¹³
Traction Control (TRAC)
Brake Assist (BA)¹⁴
Electronic Brake-force Distribution (EBD)
Direct Tire Pressure Monitor System¹⁷
Adaptive Front Lighting System (AFS) (RX 450h)
Projector style halogen headlamps (RX 350)
Bi-xenon High-Intensity Discharge (HID) headlamps with dynamic auto-levelling (RX 450h)
Automatic high-beam feature (RX 450h)
Headlamp washers
Integrated foglamps
Light Emitting Diode (LED) rear taillamps
Rear-window defroster with auto-off timer
Water-repellent front-door glass
Rain-sensing intermittent windshield wipers with mist cycle
Power-adjustable, outside heated mirrors with puddle lamps and integrated turn indicators
Auto-dimming side view mirrors and auto tilt-down in reverse (RX 450h)

PASSIVE SAFETY

Driver's and front passenger's dual-stage airbag system (SRS)¹⁸
Front and rear seat-mounted side airbags (SRS)¹⁸
Front and rear side curtain airbags (SRS)¹⁸
Driver's and front passenger's knee airbags (SRS)¹⁸
Active front headrests⁹
Three-point seatbelts for all-seating positions, pre-tensioners with force limiters for front and outboard rear seats
Automatic Locking Retractor/Emergency Locking Retractor (ALR/ELR) seatbelts for front and outboard mounted rear passenger seating positions. Emergency Locking Retractor (ELR) only for driver's seat and centre rear passenger seating position
Height-adjustable front shoulder belt anchors
Height-adjustable headrests for all seats
Child Restraint Seat (CRS) tether anchor brackets for rear outboard seating positions
Rigid body structure with front and rear crumple zones
Side-impact door beams
Reinforcements in pillars and door sills
Impact-dissipating upper interior trim
Collapsible steering column
Collapsible brake pedal
Rear bumper protector (RX 450h)
Front and rear splash guards (RX 450h)

SECURITY

Vehicle theft-deterrent and engine-immobilizer system, with in-key transponder
Emergency interior trunk release
Front door handle touch sensor lock/unlock
Tool kit
First aid kit

OPTION PACKAGES

RX 350

PREMIUM PACKAGE 1

- Perforated leather-seat surfaces
- Heated and ventilated front seats
- Driver seat memory system
- Electrochromic (auto-dimming) side view mirrors
- Electrochromic (auto-dimming) rear view mirror with digital compass
- Power moonroof
- Silver painted roof rails
- Power rear door with jam protection
- Rear bumper protector
- Front and rear splash guards
- Cargo area multi-purpose net
- Cargo mat

PREMIUM PACKAGE 2

Premium Package 1, plus:

- USB audio input
- Bi-xenon High-Intensity Discharge (HID) headlamps
- Automatic high-beam feature headlamps with dynamic auto-levelling
- Adaptive Front Lighting System (AFS)
- Electrochromic (auto-dimming) rear view mirror with digital compass and integrated backup camera²

TOURING PACKAGE

Premium Package 2, plus:

- 19-inch 7-spoke aluminum alloy wheels with P235/55R19 tires
- Voice-activated HDD Navigation System¹ with remote touch
- XM Real-Time Traffic^{®14} capability
- 12-speaker Lexus premium audio system
- Rear subwoofer
- Backup camera² in navigation display
- One wallet size smart card key (delete digital compass in electrochromic rear view mirror)

SPORT PACKAGE

Touring Package, plus:

- Vehicle Dynamics Integrated Management (VDIM)¹³
- Heads-up display
- Sport-tuned suspension
- Unique alloy wheel finish

ULTRA PREMIUM PACKAGE 1

Touring Package, plus:

- Vehicle Dynamics Integrated Management (VDIM)¹³
- Premium leather seat surfaces
- Mark Levinson[®] 15-speaker Surround Sound Audio System³ with 7.1 channel architecture and in-dash six-disc DVD auto-changer
- Wide-view side monitor system⁸
- Power retractable folding exterior mirrors
- Front seat power thigh support
- Intuitive Parking Assist
- Front illuminated doorsill trim
- Wood- and leather-wrapped steering wheel and shift knob

ULTRA PREMIUM PACKAGE 2

Ultra Premium Package 1, plus:

- Dual-screen DVD Rear-Seat Entertainment System (RSES)
- Audio and DVD remote control
- Two sets of wireless headphones⁷
- 115v/400-watt power outlet
- Roof rail crossbars²²
- Heads-up display

OPTION PACKAGES

RX 450h

TOURING PACKAGE

- 19-inch split-5-spoke aluminum alloy wheels with P235/55R19 tires
- Voice-activated HDD Navigation System¹ with remote touch
- XM Real-Time Traffic^{®14} capability
- 12-speaker Lexus premium audio system
- Rear subwoofer
- One wallet size smart card key (delete digital compass in Electrochromic rear view mirror)

ULTRA PREMIUM PACKAGE 1

Touring Package, plus:

- LED headlamps
- Premium leather seat surfaces
- Mark Levinson[®] 15-speaker Surround Sound Audio System³ with 7.1 channel architecture and in-dash six-disc DVD auto-changer
- Wide-view side monitor system⁸
- Power retractable folding exterior mirrors
- Front seat power thigh support
- Intuitive Parking Assist
- Wood- and leather-wrapped steering wheel and shift knob
- Front illuminated doorsill trim

ULTRA PREMIUM PACKAGE 2

Ultra Premium Package 1, plus:

- Pre-Collision System (PCS)¹⁶
- Dynamic Radar Cruise Control²⁴
- Heads-up display
- Dual-screen DVD Rear-Seat Entertainment System (RSES)
- Audio and DVD remote control
- Two sets of wireless headphones⁷
- 115v/400-watt power outlet
- Roof rail crossbars²²

PERSONALIZE YOUR LEXUS

- Block heater
- Bodyside mouldings
- Cargo liner
- Hood deflector
- Rear bumper protector
- Roof rack crossbars²²
- Splash guards
- Towing hitch platform
- Towing hitch receiver²³

THE BEST WAY TO FINANCE YOUR NEW RX – EASILY, QUICKLY, AFFORDABLY.



Lexus Financial Services does nothing but finance or lease Lexus vehicles; thus, we know financing and we know Lexus. • Our interest rates are fully competitive and our terms flexible (up to 72 months). • Since we offer Web services, you can: A: check out our rate; B: save time by getting credit approved on-line – before checking out the vehicle(s) of your interest. • Finally, one-stop shopping (at all Lexus Dealerships) saves you time. We invite you to visit us at lexus.ca or call us at 1-800-26-LEXUS.

LEXUS CANADA. Every effort has been made to ensure the specifications and equipment shown are accurate based on information available at time of printing. In some cases, certain changes in standard equipment, options or product delays may occur, which would not be reflected in this brochure. Lexus Canada reserves the right to make these changes without notice or obligation. Your Lexus Dealer is the best source for up-to-date information.



Lexus invites you to join us in Club Lexus, a very exceptional compilation of services, offers, special events and pertinent information available only to Lexus owners. To register for Club Lexus, please visit lexus.ca or call 1-800-26-LEXUS.

Lexus is always looking for new ways to be respectful of the environment. As part of this effort, this paper contains post-consumer recycled material and has earned the Mixed Sources label as designated by the Forest Stewardship Council.

