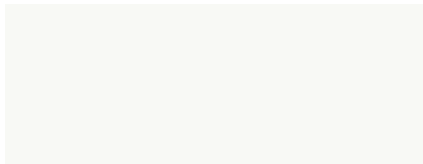


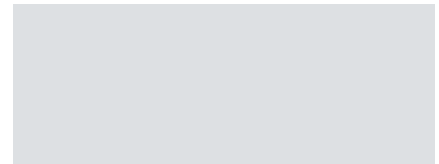
EXTERIOR COLOURS



0077
STARFIRE PEARL



01H9
NEBULA GREY PEARL



01J2
LIQUID PLATINUM



0212
OBSIDIAN



0217
STARLIGHT BLACK MICA



03S8
RIVIERA RED



04V3
FIRE AGATE PEARL

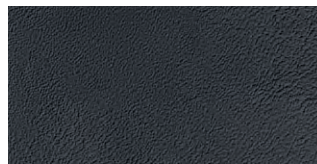


08W3
METEOR BLUE MICA

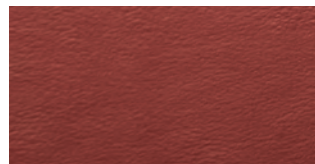
INTERIOR COLOURS



SADDLE TAN LEATHER

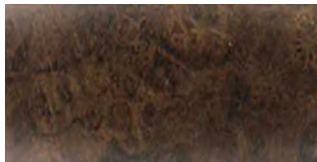


BLACK LEATHER



CABERNET LEATHER

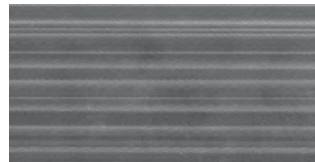
INTERIOR TRIM



DARK BROWN WALNUT†



LINEAR ESPRESSO WOOD



STRIATED ALUMINUM††

COLOUR AVAILABILITY

	STARFIRE PEARL	NEBULA GREY PEARL	LIQUID PLATINUM	OBSIDIAN	STARLIGHT BLACK MICA	RIVIERA RED	FIRE AGATE PEARL	METEOR BLUE MICA	DARK BROWN WALNUT†	LINEAR ESPRESSO WOOD	STRIATED ALUMINUM††	
SADDLE TAN LEATHER	■●	■●	■●		■●	■●	■●	■●	■	■		
BLACK LEATHER	■●▲	■●▲	■●▲	▲	■●	■●▲	■●	■●	■	■	▲	
CABERNET LEATHER	▲	▲	▲	▲		▲					▲	
INTERIOR COLOUR	■ GS 350 ● GS 450h ▲ GS 350 F SPORT PACKAGE			EXTERIOR COLOUR								INTERIOR TRIM

Visit our Web site and try on a colour. lexus.ca

†GS 350 AWD Luxury Package only. ††GS 350 F SPORT Package only.

Colours and interiors are subject to change during model year. Please see your Lexus Dealer for details.

GENERAL

TYPE	Five-passenger luxury sport sedan (GS 350) Five-passenger hybrid luxury sport sedan (GS 450h)
CONSTRUCTION	Welded-steel unibody
CURB WEIGHT	1,685 kg/3,795 lb (GS 350 RWD) 1,765 kg/3,970 lb (GS 350 AWD) 2,320 kg/5,125 lb (GS 450h)

ENGINE

	GS 350
TYPE	60° V6, aluminum block and heads, direct and port fuel injection
DISPLACEMENT	3.5 litres
VALVETRAIN	Four cam, four valves per cylinder, with Dual Variable Valve Timing with intelligence (Dual VVT-i)
HORSEPOWER AT RPM	306 hp @ 6,400 ⁹
TORQUE AT RPM	277 lb-ft @ 4,800 ⁹
EMISSION RATING	Tier 2 Bin 5 Emissions Rating
	GS 450h
TYPE	Atkinson-cycle 60° V6, aluminum block and heads, direct and port fuel injection
DISPLACEMENT	3.5 litres
VALVETRAIN	Four cam, four valves per cylinder, with Dual Variable Valve Timing with intelligence (Dual VVT-i)
ELECTRIC-DRIVE MOTOR	High-output, permanent-magnet electric motor
TOTAL SYSTEM HORSEPOWER	338 hp ^{8,9}
EMISSION RATING	Tier 2 Bin 3 Emissions Rating

DRIVETRAIN

	GS 350
DRIVE WHEELS	Rear-wheel drive (RWD) Available all-wheel drive (AWD)
TRANSMISSION	Six-speed automatic, Electronically Controlled Transmission with intelligence (ECT-i) and paddle shifters
	GS 450h
DRIVE WHEELS	Rear-wheel drive (RWD)
TRANSMISSION	Electronically controlled Continuously Variable Transmission with intelligence (ECVT-i) and paddle shifters

CHASSIS

SUSPENSION	Front: Independent, double-wishbone with coil springs, gas-pressurized shock absorbers and stabilizer bar Rear: Independent, multi-link with coil springs, gas-pressurized shock absorbers and stabilizer bar Adaptive Variable Suspension (AVS) with electronically modulated damping (GS 350 AWD Luxury Package, GS 450h) F Sport-tuned Adaptive Variable Suspension (AVS) with electronically modulated damping (GS 350 with F Sport Package)
STEERING	Electronic Power Steering (EPS) system, 2.8 turns lock-to-lock Variable Gear-Ratio Steering (VGRS), progressive power-assisted rack-and-pinion, Dynamic Rear Steering (DRS), 2.2-2.6 turns lock-to-lock (GS 350 RWD with F Sport Package)
BRAKES	Four-wheel power-assisted discs, with four-sensor, four-channel Anti-lock Brake System (ABS), Electronic Brake-force Distribution (EBD) and Brake Assist (BA) ¹³ Integrated regenerative braking system (GS 450h) 13.1-inch ventilated front discs with two-piston calipers, 12.2-inch ventilated rear disc with single-piston sliding calipers 14.0-inch ventilated discs, pin-mounted to an aluminum hat with four-piston front calipers; 12.2-inch ventilated rear discs with single-piston sliding calipers (GS 350 RWD with F Sport Package)
WHEELS AND TIRES	18-inch split-5-spoke alloy wheels with P235/45R18 all-season tires (Standard) 18-inch split-9-spoke alloy wheels with P235/45R18 all-season tires (GS 350 AWD and GS 450h with Luxury or Technology Packages) 19-inch split-5-spoke alloy wheels with P235/40R19 (front), P265/35R19 (rear) tires (GS 350 RWD with F Sport Package) 19-inch split-5-spoke alloy wheels with P235/40R19 tires (GS 350 AWD with F Sport Package)

BODY AND DIMENSIONS

HEADROOM

front/rear

975/960 mm - 38.4/37.6 in

LEGROOM

front/rear

1,145/830 mm - 45.1/32.7 in

SHOULDER ROOM

1,450/1,410 mm - 57.1/55.5 in

TRUNK CAPACITY

530 litres/18.7 cubic feet (GS 350)

464 litres/16.4 cubic feet (GS 450h)

FUEL-TANK CAPACITY

66 litres/14.5 gallons

HEIGHT

1,455 mm/57.3 in



WIDTH

1,840 mm/72.4 in



WHEEL BASE

2,850 mm/112.2 in

OVERALL LENGTH

4,845 mm/190.7 in

PERFORMANCE

TOP TRACK SPEED

(electronically limited)

GS 350
GS 350 RWD 230 km/h¹⁰
GS 350 AWD 209 km/h¹⁰

FUEL ECONOMY ESTIMATES

(city/highway/combined)

GS 350 RWD 10.7/7.1/9.1 L/100 km¹¹
 26/40/31 mpg¹¹
GS 350 AWD 11.1/7.6/9.5 L/100 km¹¹
 25/37/30 mpg¹¹

AERODYNAMIC DRAG COEFFICIENT

0.26

TURNING CIRCLE

GS 350 RWD 10.6 m/34.8 ft
GS 350 AWD 10.6 m/34.8 ft

GS 450h

TOP TRACK SPEED

(electronically limited)

209 km/h¹⁰

FUEL ECONOMY ESTIMATES

(city/highway/combined)

6.5/6.2/6.4 L/100 km¹¹
 43/46/44 mpg¹¹

AERODYNAMIC DRAG COEFFICIENT

0.26

TURNING CIRCLE

10.6 m/34.8 ft

WHEELS



18-inch split-5-spoke alloy wheels
STANDARD



18-inch split-9-spoke alloy wheels
AVAILABLE

GS 350 AWD with LUXURY or TECHNOLOGY PACKAGES
 GS 450h with LUXURY or TECHNOLOGY PACKAGES



19-inch split-5-spoke alloy wheels
AVAILABLE

GS 350 with F SPORT PACKAGE

STANDARD LUXURY FEATURES

GS 350

LUXURY AND CONVENIENCE

- Drive Mode Select
- SmartAccess¹⁷ with push-button Start/Stop
- Dual-zone automatic climate control with interior air filter, smog sensor and automatic recirculation mode; S-Flow energy-saving airflow control uses occupant detection sensors to optimize front-seat airflow
- Power tilt-and-telescopic steering column with automatic tilt-away
- Lexus Memory System to control power driver's seat (except lumbar), outside mirrors and steering wheel
- Power tilt-and-slide moonroof with one-touch open/close and sliding sunshade
- Power windows with one-touch auto open/close feature
- Retained accessory power for windows and moonroof
- Electrochromic (auto-dimming) inside rearview mirror and outside mirrors
- Power rear sunshade
- White LED interior illumination
- HomeLink^{®24} universal transceiver to operate compatible garage, gate, home lighting and home security systems
- Lexus Personalized Settings (LPS) to customize select vehicle functions
- Headlamp washers
- Cruise control
- Rain-sensing intermittent windshield wipers with deicer

SEATING AND TRIM

- High-gloss linear espresso wood interior trim
- Perforated leather-trimmed interior
- Leather-trimmed steering wheel and shift knob
- 10-way driver's and front passenger's (including lumbar) power seats
- Height-adjustable headrests for all seats
- Heated and ventilated front seats

AUDIO, COMMUNICATION AND INSTRUMENTATION

- Lexus 12-speaker Premium Surround Sound System with Automatic Sound Levelizer (ASL) and CD/DVD player
- Eight-inch high-resolution colour multimedia display
- 3.5-inch colour TFT multi-information display in gauge cluster
- Remote Touch controller
- Integrated XM[®] Satellite Radio⁵
- USB audio input for iPod^{®6}/compatible music player integration with audio system
- Bluetooth^{®7} capability with automatic phonebook synchronization
- Advanced voice command
- Bluetooth^{®7} audio profile for wireless integration of compatible music players with in-vehicle audio system
- Backup camera²
- Steering-wheel-mounted audio, phone and display controls
- Drive Mode Select with Normal, ECO and Sport S mode

OPTION PACKAGES

GS 350 NAVIGATION PACKAGE

- Heated steering wheel
- Navigation System¹ with route guidance
- 12.3-inch high-resolution split-screen multimedia display

GS 350 AWD LUXURY PACKAGE

Includes Navigation Package equipment plus:

- Heated wood and leather-trimmed steering wheel and shift knob
- Semi-aniline leather trimmed interior
- 18-way power front seats with power-adjustable four-way lumbar, side bolsters, thigh support, articulating backrest, extendable lower cushions and adjustable calf support for passenger seat; butterfly headrests
- Lexus Memory System for front-passenger seat
- Heated rear seats
- Three-zone automatic climate control
- 18-inch split-9-spoke alloy wheels
- Adaptive Variable Suspension (AVS) with electronically controlled shock absorbers
- Rear-door manual sunshades
- Adaptive Front Lighting System (AFS)
- Drive Mode Select adds Sport S+ mode
- Direct Tire Pressure Monitor System with tire inflation pressure display function¹⁵

GS 350 AWD TECHNOLOGY PACKAGE

Includes GS 350 AWD Luxury Package equipment plus:

- Heads-up Display
- Mark Levinson[®] 17-speaker, 835-watt⁴ Premium Surround Sound Audio System³ with 7.1 channel architecture, digital amplifier and Green Edge[™] speaker technology
- Blind Spot Monitor System²³

GS 350 AWD TECHNOLOGY PLUS PACKAGE

Includes GS 350 AWD Technology Package equipment plus:

- Pre-Collision System (PCS)¹⁴
- Dynamic Radar Cruise Control¹⁹
- Clearance and backup sonar
- Lexus Night View System²²
- Driver Attention Monitor System²⁰

GS 350 RWD F SPORT PACKAGE

Includes GS 350 Navigation Package equipment plus:

- 19-inch split-5-spoke alloy wheels
- Staggered fitment summer tires
- F SPORT-tuned Adaptive Variable Suspension (AVS) with electronically controlled shock absorbers
- Lexus Dynamic Handling System with Dynamic Rear Steering (DRS)
- Variable Gear-Ratio Steering (VGRS)
- F SPORT steering wheel, shift knob and scuff plates
- 14-inch, two-piece front-brake rotors with four-piston calipers
- 16-way F SPORT driver's seat with power side bolsters, thigh support, four-way lumbar and extendable lower cushion
- Striated aluminum interior trim
- Drive Mode Select adds Sport S+ mode
- Aluminum sport pedals with rubber inserts
- Black headliner
- F SPORT exterior styling including unique front bumper, upper and lower grille inserts, rear valence and rear lip spoiler

GS 350 AWD F SPORT PACKAGE

Includes GS 350 Navigation Package equipment plus:

- 19-inch split-5-spoke alloy wheels with all-season tires
- F SPORT-tuned Adaptive Variable Suspension (AVS) with electronically controlled shock absorbers
- 16-way F SPORT driver's seat with power side bolsters, thigh support, four-way lumbar and extendable lower cushion
- Striated aluminum interior trim
- Drive Mode Select adds Sport S+ mode
- Three-spoke F SPORT steering wheel, shift knob and scuff plates
- Aluminum sport pedals with rubber inserts
- Black headliner
- F SPORT exterior styling including unique front bumper, upper and lower grille inserts, rear valence and rear lip spoiler

STANDARD LUXURY FEATURES

GS 450h

Includes standard GS 350 features plus:

- Adaptive Variable Suspension (AVS) with electronically controlled shock absorbers
- Heated steering wheel
- Water-repellent front-door glass
- Dynamic tachometer and Hybrid System Indicator, based on selected drive mode
- Rear valence with concealed exhaust outlets
- Climate control front seats with heat and air-conditioning
- Navigation System¹ with route guidance
- 12.3-inch high-resolution split-screen multimedia display

OPTION PACKAGES

GS 450h LUXURY PACKAGE

- Heated wood and leather-trimmed steering wheel
- Mark Levinson[®] 17-speaker, 835-watt⁴ Premium Surround Sound Audio System³ with 7.1 channel architecture, digital amplifier and Green Edge[™] speaker technology
- Lexus Memory System for front-passenger seat
- Rear-door manual sunshades
- Heated rear seats
- Premium leather seat surfaces
- 18-way power front seats with power-adjustable four-way lumbar, side bolsters, thigh support, articulating backrest, extendable lower cushions and adjustable calf support
- 18-inch split-9-spoke alloy wheels
- Adaptive Front Lighting System
- Direct Tire Pressure Monitor System with tire inflation pressure display function

GS 450h TECHNOLOGY PACKAGE

Includes GS 450h Luxury Package equipment plus:

- Blind Spot Monitor System²³
- Heads-up Display
- Pre-Collision System (PCS)¹⁴
- Driver Attention Monitor System²⁰
- Clearance and backup sonar
- Lexus Night View System²²
- Light Emitting Diode (LED) headlamps
- Dynamic Radar Cruise Control



STANDARD SAFETY AND SECURITY FEATURES

ACTIVE SAFETY

- Four-wheel ventilated power-assisted disc brakes
- Four-sensor, four-channel Anti-lock Brake System (ABS)
- Vehicle Dynamics Integrated Management (VDIM)¹² with cutoff switch
- Vehicle Stability Control (VSC)¹²
- Traction Control (TRAC)
- Brake Assist (BA)¹³
- Electronic parking brake with auto and hold functions
- Electronic Brakeforce Distribution (EBD)
- Smart Stop Technology¹⁸
- Direct Tire Pressure Monitor System¹⁵
- Bi-Xenon™ High-Intensity Discharge (HID) headlamps with LED daytime running lights and dynamic auto-levelling
- Integrated foglamps (excluding GS 350 F SPORT)
- LED taillamps
- Power-adjustable outside mirrors with defoggers, puddle lamps, integrated turn indicators and auto tilt-down in reverse

PASSIVE SAFETY

- Driver's and front passenger's dual-stage airbag system (SRS)¹⁶
- Front and rear seat-mounted side airbags (SRS)¹⁶
- Front and rear side curtain airbags (SRS)¹⁶
- Driver's and front passenger's knee airbags (SRS)¹⁶
- Whiplash Injury Lessening (WIL) front seats²¹
- Three-point seatbelts for all-seating positions, pre-tensioners with force limiters for front and outboard rear seats
- Automatic Locking Retractor/Emergency Locking Retractor (ALR/ELR) seatbelts for front and outboard mounted rear-passenger seating positions. Emergency Locking Retractor (ELR) only for driver's seat and centre rear-passenger seating position
- Height-adjustable front shoulder belt anchors
- Child Restraint Seat (CRS) tether anchor brackets for rear outboard seating positions
- Rigid body structure with front and rear crumple zones
- Side-impact door beams
- Reinforcements in pillars and door sills
- Impact-dissipating interior trim

SECURITY

- Vehicle theft-deterrent and engine-immobilizer system, with in-key transponder
- Emergency interior trunk release
- Wheel locks

THE BEST WAY TO FINANCE YOUR NEW GS – EASILY, QUICKLY, AFFORDABLY.



• Lexus Financial Services does nothing but finance or lease Lexus vehicles; thus, we know financing and we know Lexus. • Our interest rates are fully competitive and our terms flexible (up to 72 months). • Since we offer Web services, you can: A: check out our rate; B: save time by getting credit approved on-line – before checking out the vehicle(s) of your interest. • Finally, one-stop shopping (at all Lexus Dealerships) saves you time. We invite you to visit us at lexus.ca or call us at 1-800-26-LEXUS.

LEXUS CANADA. Every effort has been made to ensure the specifications and equipment shown are accurate based on information available at time of printing. In some cases, certain changes in standard equipment, options or product delays may occur, which would not be reflected in this brochure. Lexus Canada reserves the right to make these changes without notice or obligation. Your Lexus Dealer is the best source for up-to-date information.



LEXUS invites you to join us in Club Lexus, a very exceptional compilation of services, offers, special events and pertinent information available only to Lexus owners. To register for Club Lexus, please visit lexus.ca or call 1-800-26-LEXUS.

Lexus is always looking for new ways to be respectful of the environment. As part of this effort, this paper contains post-consumer recycled material and has earned the Mixed Sources label as designated by the Forest Stewardship Council.