

EXTERIOR



STARFIRE PEARL
0077



ULTRA WHITE
0083



NEBULA GREY PEARL
01H9



LIQUID PLATINUM
01J2



OBSIDIAN
0212



METEOR BLUE MICA
08W3



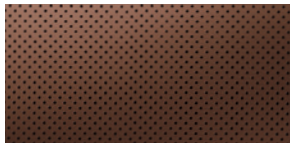
CRIMSON RED
03S8



FIRE AGATE PEARL
04V3

INTERIOR

SADDLE TAN



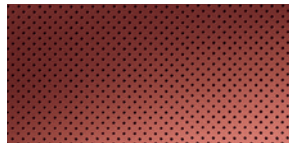
LEATHER - PERFORATED
PREMIUM LEATHER - PERFORATED

BLACK



LEATHER - PERFORATED
PREMIUM LEATHER - PERFORATED

CABERNET



LEATHER - PERFORATED
PREMIUM LEATHER - PERFORATED

INTERIOR TRIM

DARK BROWN



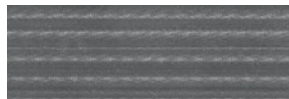
WALNUT WOOD TRIM

ESPRESSO



LINEAR TRIM

STRIATED



ALUMINUM TRIM

Take another look at colours and try out a combination or two at [lexus.ca](https://www.lexus.ca)

KEY FEATURES & SPECIFICATIONS

LUXURY AND CONVENIENCE:

- SmartAccess with push-button Start/Stop¹⁷
- Multi-function, in-key remote entry system with rolling-code technology
- Dual-zone automatic climate control; S-Flow energy-saving airflow control
- Power moonroof
- HomeLink® universal transceiver²⁴
- Auto-dimming outside rearview mirrors
- Lexus Personalized Settings (LPS) to customize select electronic functions
- Power retractable rear window sunshade
- Backup camera²

SEATING AND TRIM:

- Perforated leather seat surfaces
- Heated and ventilated front seats
- High-gloss linear espresso wood interior trim
- Heated leather-wrapped steering wheel
- Leather-wrapped shift knob
- Power tilt-and-telescopic steering wheel with automatic tilt-away
- 10-way power-adjustable driver and front passenger seats (including lumbar)
- Driver Seat Memory System

AUDIO, COMMUNICATIONS AND INSTRUMENTATION:

- 8-speaker Lexus premium audio system
- 8-inch high-resolution colour multimedia display
- Remote Touch controller
- Integrated XM® Satellite Radio⁵
- USB and auxiliary minijack audio input for iPod/iPhone® and music player integration with audio system⁶
- Bluetooth® audio profile for wireless integration of compatible music players and automatic phonebook synchronization⁷
- Electroluminescent instrumentation
- Analog clock with LED illumination
- Steering wheel-mounted audio, phone and display controls
- Drive Mode Select with Normal, ECO and Sport modes

ACTIVE SAFETY:

- Vehicle Dynamics Integrated Management (VDIM)¹²
- Vehicle Stability Control (VSC)¹²
- Electronic brake-force distribution (EBD)
- Smart Stop Technology¹⁸
- Direct Tire Pressure Monitor System¹⁵
- Electronic parking brake with auto and hold functions
- Power-adjustable outside mirrors with defoggers, puddle lamps, integrated turn indicators and auto tilt-down in reverse
- Bi-Xenon HID headlamps with dynamic auto-leveling
- LED daytime running lamps
- LED brake lamps
- Headlamp washers

PASSIVE SAFETY:

- Driver and front-passenger airbag system (SRS)¹⁶
- Front seat-mounted side airbags¹⁶
- Rear outboard seat-mounted side airbags¹⁶
- Front and rear side curtain airbags¹⁶
- Driver and front-passenger knee airbags¹⁶
- Active front headrests
- Whiplash Injury Lessening (WIL) front seats²¹
- Child Restraint System (CRS) tether anchor brackets for rear outboard seats

SECURITY:

- Vehicle theft-deterrent system
- Engine immobilizer system
- Tool kit
- First aid kit

LEXUS GENUINE ACCESSORIES:

- Block heater
- Paint protection film
- Bodyside moulding
- Rear lip spoiler

BODY AND DIMENSIONS

OVERALL LENGTH	4,845 mm/190.7 in	HEADROOM	Front	975 mm/38.4 in	TRUNK CAPACITY	530 litres/18.7 cubic feet (GS 350)
WHEELBASE	2,850 mm/112.2 in		Rear	960 mm/37.6 in	(max)	464 litres/16.4 cubic feet (GS 450h)
WIDTH	1,840 mm/72.4 in	LEGROOM	Front	1,145 mm/45.1 in	FUEL TANK CAPACITY	66 litres/14.5 gallons
HEIGHT	1,455 mm/57.3 in		Rear	830 mm/32.7 in		
		SHOULDER ROOM	Front	1,450 mm/57.1 in		
			Rear	1,410 mm/55.5 in		

ENGINE

TYPE	V6, 3.5 litres (GS 350) V6, 3.5 litres, Atkinson cycle (GS 450h) Direct and port fuel injection Dual Variable Valve Timing with intelligence (VVT-i) Lexus Hybrid Drive (GS 450h)		
HORSEPOWER	306 hp @ 6,400 rpm ⁹ (GS 350) 338 hp (total system net horsepower) ^{8,9} (GS 450h)		
TORQUE	277 lb-ft @ 4,800 rpm ⁹ (GS 350)		
CURB WEIGHT	1,685 kg/3,795 lb (GS 350) 1,765 kg/3,970 lb (GS 350 AWD) 2,320 kg/5,125 lb (GS 450h)		
FUEL ECONOMY ESTIMATES (city/highway/combined)	10.7/7.1/9.1 L/100km ¹¹ 11.1/7.6/9.5 L/100km ¹¹ 6.5/6.2/6.4 L/100km ¹¹	22/34/26 mpg ¹¹ 25/37/30 mpg ¹¹ 43/46/44 mpg ¹¹	GS 350 GS 350 AWD GS 450h
AERODYNAMIC DRAG COEFFICIENT	0.26		

DRIVETRAIN

DRIVE WHEELS	Rear-wheel drive (RWD) (GS 350, GS 450h) All-wheel drive (AWD) (GS 350 AWD) Vehicle Dynamics Integrated Management (VDIM) ¹² Vehicle Stability Control (VSC) ¹² Traction Control (TRAC) Drive Mode Select
TRANSMISSION	8-Speed Sport Direct Shift (SPDS) sequential automatic (GS 350) G AI-Shift Control 6-Speed sequential automatic with paddle shifters (GS 350 AWD) Electronically controlled Continuously Variable Transmission (ECVT) with paddle shifters (GS 450h)

CHASSIS

FRONT SUSPENSION	Independent, double-wishbone with coil springs, gas-pressurized shock absorbers and stabilizer bar
REAR SUSPENSION	Independent, multi-link with coil springs, gas-pressurized shock absorbers and stabilizer bar Adaptive Variable Suspension (AVS) (GS 350 Optional, GS 450h) <i>F SPORT</i> -tuned Adaptive Variable Suspension (AVS) (GS 350 <i>F SPORT</i>)
STEERING	Electric Power Steering (EPS) Variable Gear-Ratio Steering (VGRS) (GS 350 RWD <i>F SPORT</i>) Dynamic Rear Steering (DRS) (GS 350 RWD <i>F SPORT</i>)
BRAKES	Four-wheel power-assisted disc brakes Four-sensor, four-channel Anti-lock Brake System (ABS) Electronic Brake-force distribution (EBD) Brake Assist (BA) ¹⁵ Regenerative braking system (GS 450h) 14.0-inch ventilated discs, pin-mounted to an aluminum hat with four-piston front calipers; 12.2-inch ventilated rear discs with single-piston sliding calipers (GS 350 RWD <i>F SPORT</i>)
TIRES	P235/45R18 all-season tires (Standard) P235/40R19 (front), P265/35R19 (rear) performance summer tires (GS 350 RWD <i>F SPORT</i>) P235/40R19 all-season tires (GS 350 AWD <i>F SPORT</i>) Temporary spare tire

WHEELS



18-inch split 5-spoke alloy wheels
Standard



18-inch split 9-spoke alloy wheels
with liquid graphite finish
Optional



19-inch split 5-spoke alloy wheels
F SPORT

OPTION PACKAGES



GS 350

NAVIGATION PACKAGE

Voice-activated Navigation System with Remote Touch¹
12.3-inch high-resolution split-screen multimedia display

F SPORT PACKAGE

Includes Navigation Package plus:
F SPORT 19-inch split 5-spoke alloy wheels with staggered performance summer tires
F SPORT tuned Adaptive Variable Suspension (AVS)
F SPORT tuned Electric Power Steering (EPS) with Variable Gear Ratio Steering (VGRS)
Drive Mode Select with Sport S+ Mode
Lexus Dynamic Handling System with Dynamic Rear Steering (DRS)
F SPORT front bumper, upper and lower grille inserts, rear valence, rear lip spoiler
F SPORT front seats with 16-way power-adjustable side bolsters, thigh support, four-way lumbar
F SPORT leather-wrapped steering wheel
F SPORT leather-wrapped shift knob
F SPORT aluminum sport pedals
F SPORT aluminum interior trim
F SPORT doorsill trim
Black headliner
Power trunk open/close
Fog lamps deleted



GS 350 AWD

NAVIGATION PACKAGE

Voice-activated Navigation System with Remote Touch¹
12.3-inch high-resolution split-screen multimedia display

F SPORT PACKAGE

Includes Navigation Package plus:
F SPORT 19-inch split 5-spoke alloy wheels with all-season tires
F SPORT tuned Adaptive Variable Suspension (AVS)
F SPORT tuned Electric Power Steering (EPS)
Drive Mode Select with Sport S+ Mode
F SPORT front bumper, upper and lower grille inserts, rear valence, rear lip spoiler
F SPORT front seats with 16-way power-adjustable side bolsters, thigh support, four-way lumbar
F SPORT leather-wrapped steering wheel
F SPORT leather-wrapped shift knob
F SPORT aluminum sport pedals
F SPORT aluminum interior trim
F SPORT doorsill trim
Black headliner
Power trunk open/close
Fog lamps deleted

LUXURY PACKAGE

Includes Navigation Package plus:
18-inch split 9-spoke alloy wheels with liquid graphite finish
Adaptive Variable Suspension (AVS)
Drive Mode Select with Sport S+
Direct Tire Pressure Monitor System¹⁵
Adaptive Front Lighting System (AFS)
LED fog lamps
Perforated premium leather seat surfaces
18-way power-adjustable front seats (including lumbar), side bolsters, thigh support, articulating backrest, butterfly headrests
Lexus Memory System for front-passenger seat
Wood and leather-trimmed steering wheel
3-Zone Climate Concierge
Heated rear outboard seats
Rear door manual sunshades
Power trunk open/close

TECHNOLOGY PACKAGE

Includes Luxury Package plus:
17-speaker Mark Levinson[®] Surround Sound System with Green Edge[®] speaker technology
Heads-up Display
Blind Spot Monitor²³
Rear Cross-Traffic Alert²⁵
Power-folding exterior rearview mirrors

TECHNOLOGY PLUS PACKAGE

Includes Technology Package plus:
Pre-Collision System¹⁴
Dynamic Radar Cruise Control¹⁹
Driver Attention Monitor²⁰
Intuitive parking assist



GS 450h

NAVIGATION PACKAGE

(included as standard equipment)
Voice-activated Navigation System with Remote Touch¹
12.3-inch high-resolution split-screen multimedia display

LUXURY PACKAGE

Includes Navigation Package plus:
18-inch split 9-spoke alloy wheels with liquid graphite finish
Direct Tire Pressure Monitor System¹⁵
Adaptive Front Lighting System (AFS)
LED fog lamps
17-speaker Mark Levinson[®] Surround Sound System with Green Edge[®] speaker technology
Perforated premium leather seat surfaces
18-way power-adjustable front seats (including lumbar), side bolsters, thigh support, articulating backrest, butterfly headrests
Lexus Memory System for front-passenger seat
Wood and leather-trimmed steering wheel
3-Zone Climate Concierge
Heated rear outboard seats
Rear door manual sunshades
Power trunk open/close

TECHNOLOGY PACKAGE

Includes Luxury Package plus:
LED headlamps
Heads-up Display
Pre-Collision System¹⁴
Dynamic Radar Cruise Control¹⁹
Driver Attention Monitor²⁰
Blind Spot Monitor²³
Rear Cross-Traffic Alert²⁵
Intuitive parking assist
Power-folding exterior rearview mirrors