

## EXTERIOR COLOURS



0077  
STARFIRE PEARL



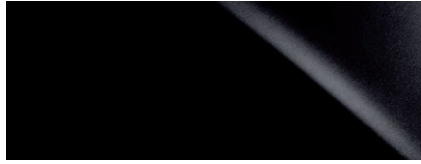
0083  
ULTRA WHITE



01H9  
NEBULA GREY PEARL



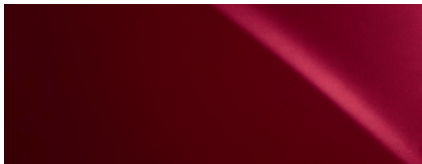
01J2  
LIQUID PLATINUM



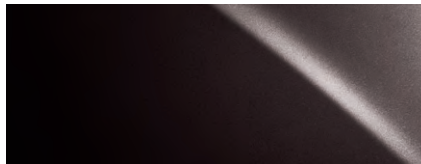
0212  
OBSIDIAN



0217  
STARLIGHT BLACK MICA



03R1  
MATADOR RED MICA



04V3  
FIRE AGATE PEARL

## INTERIOR COLOURS



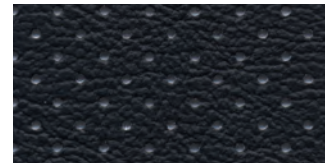
PARCHMENT LEATHER



BLACK LEATHER

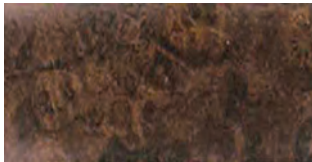


SADDLE TAN/BLACK LEATHER

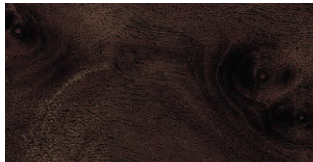


BLACK LEATHER  
with WHITE PERFORATIONS

## INTERIOR TRIM



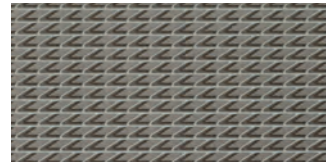
DARK BROWN WALNUT



MATTE DARK BROWN  
ASH BURL



SHIMAMOKU ESPRESSO



GENUINE ALUMINUM

## COLOUR AVAILABILITY

	STARFIRE PEARL	ULTRA WHITE	NEBULA GREY PEARL	LIQUID PLATINUM	OBSIDIAN	STARLIGHT BLACK MICA	MATADOR RED MICA	FIRE AGATE PEARL	DARK BROWN WALNUT	MATTE DARK BROWN ASH BURL	SHIMAMOKU ESPRESSO	GENUINE ALUMINUM
PARCHMENT LEATHER	●				■●			■●	■●			
BLACK LEATHER	■●		■●	■●	■●						■●	
SADDLE TAN/BLACK LEATHER	●		■●	■●	■●		■	■		■●		
BLACK LEATHER WITH WHITE PERFORATIONS		■	■		■	■	■					■
INTERIOR COLOUR	■ LS 460 MODELS			● LS 600hL			EXTERIOR COLOUR					
									INTERIOR TRIM			

Visit our Web site and try on a colour. [lexus.ca](http://lexus.ca)

F SPORT Package interiors are available exclusively with Black leather with White perforations and genuine aluminum.

Colours and interiors are subject to change during model year. Please see your Lexus Dealer for details.

## GENERAL

<b>TYPE</b>	Five-passenger luxury sport sedan (LS 460) Five-passenger premium hybrid luxury sedan (LS 600h L)
<b>CONSTRUCTION</b>	Welded-steel unibody
<b>CURB WEIGHT</b>	1,920 kg/4,233 lb (LS 460 RWD) 1,940 kg/4,277 lb (LS 460 AWD) 1,980 kg/4,365 lb (LS 460 L) 2,370 kg/5,255 lb (LS 600h L)

## DRIVETRAIN

<b>DRIVE WHEELS</b>	Rear-wheel drive (LS 460 RWD) Rear-wheel drive (RWD) with TORSEN <sup>®21</sup> limited-slip centre differential (LS F SPORT RWD) Full-time all-wheel drive (AWD) with TORSEN <sup>®21</sup> limited-slip centre differential (LS 460 AWD, LS 460 L, LS F SPORT AWD, LS 600h L) Vehicle Stability Control (VSC), <sup>14</sup> Traction Control (TRAC), Vehicle Dynamics Integrated Management (VDIM) <sup>14</sup>
<b>TRANSMISSION</b>	Eight-speed sequential-shift automatic Electronically Controlled Transmission with intelligence (ECT-i) (LS 460 RWD, LS 460 AWD, LS 460 L) Paddle shifters (LS F SPORT) Electronically controlled Continuously Variable Transmission (ECVT) with snow mode (LS 600h L)

## PERFORMANCE

<b>TOP TRACK SPEED</b>	210 km/h <sup>11</sup> (electronically limited)
<b>FUEL ECONOMY ESTIMATES</b>	12.9/8.2/10.8 L/100 km 22/34/26 mpg <sup>13</sup> (city/highway/combined) 13.5/8.7/11.3 L/100 km 21/32/25 mpg <sup>13</sup> (LS 460 AWD, LS 460 L) 10.6/9.1/9.9 L/100 km 27/31/29 mpg <sup>13</sup> (LS 600h L)
<b>AERODYNAMIC DRAG COEFFICIENT</b>	0.26 (LS 460, LS 460 L) 0.27 (LS 600h L)
<b>TURNING CIRCLE</b>	10.8 m/35.4 ft (LS 460 RWD) 11.4 m/37.4 ft (LS 460 AWD) 11.8 m/38.7 ft (LS 460 L) 12.0 m/39.4 ft (LS 600h L)

## CHASSIS

<b>SUSPENSION</b>	Front: Independent upper and lower multi-link double-joint suspension arms with stabilizer bar Rear: Independent multi-link suspension with stabilizer bar Height-adjustable Adaptive Variable Air Suspension (AVS) (LS 460 AWD Technology Package, LS 460 L, LS 600h L) Height-adjustable Adaptive Variable Air Suspension (AVS) F SPORT-tuned and lowered (LS F SPORT)
<b>STEERING</b>	Electronic Power Steering (EPS) system, progressive power-assisted rack-and-pinion (LS 460) Variable Gear-Ratio Steering (VGRS) (LS 600h L, optional on LS 460 L and LS 460)
<b>BRAKES</b>	Four-wheel power-assisted disc brakes with Electronic Controlled Braking (ECB), four-sensor, four-channel Anti-lock Brake System (ABS), Electronic Brake-force Distribution (EBD), Brake Assist (BA), <sup>15</sup> and Electric Parking Brake (EPB) Regenerative braking function (LS 600h L) 13.1-inch ventilated front, 12.3-inch ventilated rear discs (LS 460 RWD) 14.0-inch ventilated front, 13.1-inch ventilated rear discs (LS 460 AWD, LS 460 L, LS 600h L) 14.8-inch ventilated front discs with Brembo <sup>®</sup> opposed six-piston calipers, 13.1-inch ventilated rear discs (LS F SPORT)
<b>WHEELS AND TIRES</b>	19-inch multi-spoke alloy wheels with P245/45R19 all-season tires (LS 460) 19-inch split-7-spoke alloy wheels with P245/45R19 all-season tires (LS 460 L, LS 600h L) <i>Optional:</i> 19-inch split-10-spoke alloy wheels with P245/45R19 performance summer tires (LS F SPORT)

## ENGINE

### LS 460 and LS 460 L

TYPE	90° V8, aluminum block and heads, direct and port fuel injection
DISPLACEMENT	4.6 litres
VALVETRAIN	Four cam, four valves per cylinder, with Dual Variable Valve Timing with intelligence and Electronic intake valve timing (Dual VVT-iE)
COMPRESSION RATIO	11.8:1
HORSEPOWER AT RPM	386 hp @ 6,400 (LS 460 RWD) <sup>11</sup> 360 hp @ 6,400 (LS 460 AWD, LS 460 L) <sup>11</sup>
TORQUE AT RPM	367 lb-ft @ 4,100 (LS 460 RWD) <sup>11</sup> 347 lb-ft @ 4,100 (LS 460 AWD, LS 460 L) <sup>11</sup>
EMISSION RATING	Tier 2 Bin 5 Emissions Rating

### LS 600h L

TYPE	90° V8, aluminum block and heads, direct and port fuel injection
DISPLACEMENT	5.0 litres
VALVETRAIN	Four cam, four valves per cylinder, with Dual Variable Valve Timing with intelligence and Electronic intake valve timing (Dual VVT-iE)
COMPRESSION RATIO	11.8:1
ELECTRIC-DRIVE MOTOR	High-output, permanent-magnet, electric motor with EV mode
TOTAL SYSTEM HORSEPOWER	438 hp <sup>11,12</sup>
EMISSION RATING	Tier 2 Bin 3 Emissions Rating

## WHEELS



19-inch multi-spoke alloy wheels  
STANDARD  
LS 460



19-inch split-7-spoke alloy wheels  
STANDARD  
LS 460 L and LS 600h L



19-inch split-10-spoke alloy wheels  
AVAILABLE  
LS F SPORT

## BODY AND DIMENSIONS

### HEIGHT

1,465 mm/57.7 in (LS 460 L)  
1,475 mm/58.1 in (LS 460)  
1,480 mm/58.3 in (LS 600h L)



WIDTH 1,875 mm/73.8 in

### LS 460



WHEELBASE 2,970 mm/116.9 in

OVERALL LENGTH 5,090 mm/200.0 in

### LS 460 L and LS 600h L



WHEELBASE 3,090 mm/121.7 in

OVERALL LENGTH 5,210 mm/205.0 in

### HEADROOM

front/rear  
965/964 mm - 38.0/38.0 in

### LEGROOM

front/rear  
1,110/909 mm - 43.7/35.8 in (LS 460)  
1,110/933 mm - 43.7/36.7 in (LS 460 L, LS 600h L)

### SHOULDER ROOM

front/rear  
1,487/1,446 mm - 58.5/56.9 in (LS 460)  
1,487/1,432 mm - 58.5/56.4 in (LS 460 L, LS 600h L)

### TRUNK CAPACITY

510 litres/18.0 cubic feet (LS 460, LS 460 L)  
370 litres/13.0 cubic feet (LS 600h L)

### FUEL-TANK CAPACITY

84 litres/18.5 gallons

## STANDARD LUXURY FEATURES

### LUXURY AND CONVENIENCE

- SmartAccess<sup>19</sup> with push-button Start/Stop
- Dual-zone automatic climate control with interior air filter, smog sensor and automatic recirculation mode (LS 460 RWD, LS 460 AWD)
- Four-zone automatic climate control (LS 460 L, LS 600h L)
- Lexus Memory System with three settings to control power driver's seat (except lumbar), outside mirrors and steering wheel
- Power windows and tilt-and-slide moonroof with one-touch open/close
- Remote-linked window/moonroof opening and closing
- Electrochromic (auto-dimming) inside rearview mirror and outside mirrors
- Power door locks
- Hybrid blue accented front headlamps, rear tail lamps, logos and badges (LS 600h L)
- Cruise control (LS 460 RWD, LS 460 AWD)
- Dynamic Radar Cruise Control<sup>22</sup> (LS 460 L, LS 600h L)
- Power door closers and power trunk open/close (LS 460 L, LS 600h L)
- HomeLink<sup>®28</sup> universal transceiver to operate compatible garage, gate, home lighting and home security systems
- Lexus Personalized Settings (LPS) to customize select electronic functions
- Power rear window sunshade
- Power rear-door sunshade (LS 600h L)
- Advanced Parking Guidance System (APGS) (LS 600h L)
- Wood and leather console box (LS 460 L)

### SEATING AND TRIM

- Wood grain interior trim
- Premium leather seats surfaces
- Escaine roof headliner (LS 600h L)
- Leather-trimmed interior
- NuLuxe door trim (LS 460, LS 460 L)
- Heated wood- and leather-trimmed steering wheel (leather-trimmed on LS 460 F SPORT)
- Power tilt-and-telescopic steering wheel with automatic tilt-away
- Wood-trimmed shift knob with leather (LS 460, LS 460 L)
- Wood-trimmed shift knob with chrome (LS 600h L)
- 16-way driver's (including dual-function lumbar) with auto slide-away and 12-way front passenger's (including lumbar) power seats
- Climate control front seats with heat and air conditioning
- Heated rear seats (LS 460)
- Power rear seats (LS 460 L, LS 600h L)
- Climate control rear seats with heat and air conditioning (LS 460 L, LS 600h L)
- Rear-seat massage settings (LS 460 L)
- Height-adjustable headrests for all seats

### AUDIO, COMMUNICATION AND INSTRUMENTATION

- Navigation System<sup>1</sup> with 12.3-inch high-resolution multimedia display with integrated backup camera<sup>2</sup> and enhanced Bluetooth<sup>®</sup> capability<sup>7</sup>
- Lexus 10-speaker, Premium Surround Sound System with Automatic Sound Levelizer (ASL) and DVD/CD player (LS 460)
- Mark Levinson<sup>®</sup> 19-speaker, 450-watt<sup>4</sup> Reference Surround Sound Audio System<sup>3</sup> with 7.1-channel architecture and DVD/CD player (LS 460 L, LS 600h L)
- Remote touch interface
- Satellite roof-mounted fin antenna
- Integrated XM<sup>®</sup> Satellite Radio<sup>5</sup>
- USB and auxiliary iPod<sup>®6</sup>/MP3/Windows Media Audio (WMA) port
- Drive Mode Select
- Intuitive Parking Assist
- Steering-wheel-mounted audio controls
- Electronic Thin Film Transistor (TFT) multi-information display
- Electroluminescent instrumentation

## STANDARD SAFETY AND SECURITY FEATURES

### ACTIVE SAFETY

- Four-wheel ventilated power-assisted disc brakes
- Electronic Controlled Braking (ECB)
- Four-sensor, four-channel Anti-lock Brake System (ABS)
- Brake Assist (BA)<sup>15</sup>
- Electronic Brake-force Distribution (EBD)
- Vehicle Dynamics Integrated Management (VDIM)<sup>14</sup>
- Vehicle Stability Control (VSC)<sup>14</sup>
- Traction Control (TRAC)
- Smart Stop Technology<sup>20</sup>
- Pre-Collision System (PCS)<sup>16</sup> (LS 460 L)
- Advanced Pre-Collision System (PCS)<sup>25</sup> (LS 600h L)
- Clearance and backup sensors
- Active Pedestrian Detection System<sup>26</sup> (LS 600h L)
- Lane Keep Assist System<sup>23</sup> (LS 600h L)
- Driver Attention Monitor<sup>24</sup> (LS 600h L)
- Blind Spot Monitor System (BSM)<sup>27</sup> with Rear Cross-Traffic Alert (RCTA)<sup>30</sup> (LS 460 L, LS 600h L)
- Direct Tire Pressure Monitor System<sup>17</sup>
- Laminated side glass and water-repellent front-door glass
- Rain-sensing intermittent windshield wipers with mist cycle
- Rear-window defroster with auto-off timer
- Bi-Xenon High Intensity Discharge (HID) headlamps with dynamic auto-levelling (LS 460, LS 460 L)
- LED headlamps with dynamic auto-levelling (LS 600h L)
- Dual-swivel Adaptive Front Lighting System (AFS) with headlamp washers
- Integrated LED foglamps
- LED rear taillamps and daytime running lights
- Power-adjustable, heated, auto-folding outside mirrors with LED turn indicators, puddle lamps and auto tilt-down in reverse

### PASSIVE SAFETY

- Driver's and front passenger's advanced airbag system (SRS)<sup>18</sup> with front passenger's twin-chamber airbag (SRS)<sup>18</sup>
- Front seat-mounted side airbags (SRS)<sup>18</sup>
- Driver's and front passenger's knee airbags (SRS)<sup>18</sup>
- Front and rear side curtain airbags (SRS)<sup>18</sup>
- Advanced active front headrests<sup>10</sup>
- Three-point seatbelts for all seating positions, pre-tensioners with force limiters for front and outboard rear seats
- Automatic Locking Retractor/Emergency Locking Retractor (ALR/ELR) seatbelts for rear outboard seating positions.
- Emergency Locking Retractor (ELR) only for driver's seat
- Height-adjustable front shoulder belt anchors
- Child Restraint Seat (CRS) tether anchor brackets for rear outboard seating positions
- Highly rigid body structure with front and rear crumple zones
- Side-impact door beams
- Reinforcements in pillars and door sills
- Impact-dissipating upper interior trim
- Collapsible steering column

### SECURITY

- Vehicle theft-deterrent and engine-immobilizer system
- Emergency interior trunk release
- Tool kit

## OPTION PACKAGES

### LS 460 RWD/LS 460 AWD

#### F SPORT PACKAGE

- 19-inch split-10-spoke forged alloy wheels with P245/45R19 performance summer tires
- Aluminum dash accents
- F SPORT shift knob
- Aluminum sport pedals with rubber inserts
- F SPORT scuff plates
- Brembo® high friction brake pads, calipers and rotors
- Electric Power Steering (EPS) with Variable Gear Ratio Steering (VGRS)
- Adaptive Variable Air Suspension (AVS)
- Sport-tuned suspension
- Paddle shifters
- Premium F SPORT leather seat surfaces
- Integrated LED foglamps
- Colour full skirt package
- F SPORT grille
- 3-spoke F SPORT steering wheel

### LS 460 AWD

#### TECHNOLOGY PACKAGE

- Mark Levinson® 19-speaker, Reference Surround Sound Audio System<sup>3</sup> with DVD/CD player
- Pre-Collision System (PCS)<sup>16</sup>
- Dynamic Radar Cruise Control<sup>22</sup>
- Blind Spot Monitor System (BSM)<sup>27</sup>
- Rear Cross-Traffic Alert (RCTA)<sup>30</sup>
- Electric Power Steering (EPS) with Variable Gear Ratio Steering (VGRS)
- Adaptive Variable Air Suspension (AVS)
- Rear-seat side airbags (SRS)<sup>18</sup>
- Power rear seats with power headrests and memory with one memory setting
- Power rear-seat lumbar support, recline and slide
- Climate control rear seats with heat and air conditioning
- Multi-zone automatic climate control
- Rear-seat massage settings
- Rear-seat cool box
- Rear-door sunshades

### LS 460L

#### EXECUTIVE PACKAGE

- Lexus Rear-Seat Entertainment System (RSES) with Blu-ray DVD player,<sup>9</sup> 9-inch Liquid Crystal Display (LCD) screen
- Two sets of wireless headphones<sup>8</sup>
- Audio and DVD remote control
- Rear audio controls
- Right-rear power reclining seat and retractable ottoman with multifunction Shiatsu massager
- Rear-seat massage settings
- Infrared body temperature sensor
- Ottoman seat cushion airbag (SRS)<sup>18</sup>
- Leather covered lower instrument panel and door armrest
- Electric Power Steering (EPS) with Variable Gear Ratio Steering (VGRS)
- Night View<sup>29</sup>
- Active Pedestrian Detection System<sup>26</sup>
- Driver Attention Monitor<sup>24</sup>
- Advanced Pre-Collision System (PCS)<sup>25</sup>
- Power rear-door sunshades
- Full auto brake
- LED headlamps

### LS 600hL

#### EXECUTIVE PACKAGE

- Lexus Rear-Seat Entertainment System (RSES) with Blu-ray DVD player,<sup>9</sup> 9-inch Liquid Crystal Display (LCD) screen
- Two sets of wireless headphones<sup>8</sup>
- Audio and DVD remote control
- Rear-seat armrest with accessory power outlet (110 V)
- Leather covered lower instrument panel and door armrest
- Right-rear power reclining seat and retractable ottoman with multifunction Shiatsu massager
- Rear-seat massage settings
- Ottoman seat cushion airbag (SRS)<sup>18</sup>
- Night View<sup>29</sup>

## PERSONALIZE YOUR LEXUS

- Block heater
- Cargo net
- Paint Protection Film

## THE BEST WAY TO FINANCE YOUR NEW LS – EASILY, QUICKLY, AFFORDABLY.



• Lexus Financial Services does nothing but finance or lease Lexus vehicles; thus, we know financing and we know Lexus. • Our interest rates are fully competitive and our terms flexible (up to 72 months). • Since we offer Web services, you can: A: check out our rate; B: save time by getting credit approved on-line – before checking out the vehicle(s) of your interest. • Finally, one-stop shopping (at all Lexus Dealerships) saves you time. We invite you to visit us at [lexus.ca](http://lexus.ca) or call us at 1-800-26-LEXUS.

LEXUS CANADA. Every effort has been made to ensure the specifications and equipment shown are accurate based on information available at time of printing. In some cases, certain changes in standard equipment, options or product delays may occur, which would not be reflected in this brochure. Lexus Canada reserves the right to make these changes without notice or obligation. Your Lexus Dealer is the best source for up-to-date information.



Lexus invites you to join us in Club Lexus, a very exceptional compilation of services, offers, special events and pertinent information available only to Lexus owners. To register for Club Lexus, please visit [lexus.ca](http://lexus.ca) or call 1-800-26-LEXUS.